

IELTS Listening Sample test

SECTION 1. QUESTIONS 1-10

Questions 1-10

Complete the notes below.

Write **NO MORE THAN TWO WORDS AND/OR A NUMBER** for each answer.

BIRMINGHAM EXHIBITION

- Open in: 1. .
- Length of exhibition: 2. .
- A wide range of manufacturers will be showcased.
- Some cars are available to observe and others are for 3. .
- The 4. is prohibited to take into the museum.
- Every ticket includes one free photo.
- Price of the ticket: 5. £ (in advance).
- Transfer to Mark 6. (Box Office Manager).
- Held in the 7. Palace this year.
- Not far from 8. .
- Website: www. 9. .com.
- Best way to contact: 10. .

SECTION 2. QUESTIONS 11-20

Questions 11-15

Answer the questions below. Choose the correct letter, **A**, **B**, or **C**.

11. How many patients does the hospital consult every year?

- A. 3,000.
- B. 5,000.
- C. 11,000.

12. When can patients meet the female doctor?

- A. On weekday mornings.
- B. Three days a week.
- C. Only on Mondays and Fridays.

13. Who is the expert on treating hearing loss?

- A. Mr. Roberts.
- B. Mr Green.
- C. Mr. Edwards.

14. Where are patients recommended to buy their medicine?

- A. The supermarket in the town.
- B. Pharmacies nearby the city centre.
- C. The health care's pharmacy.

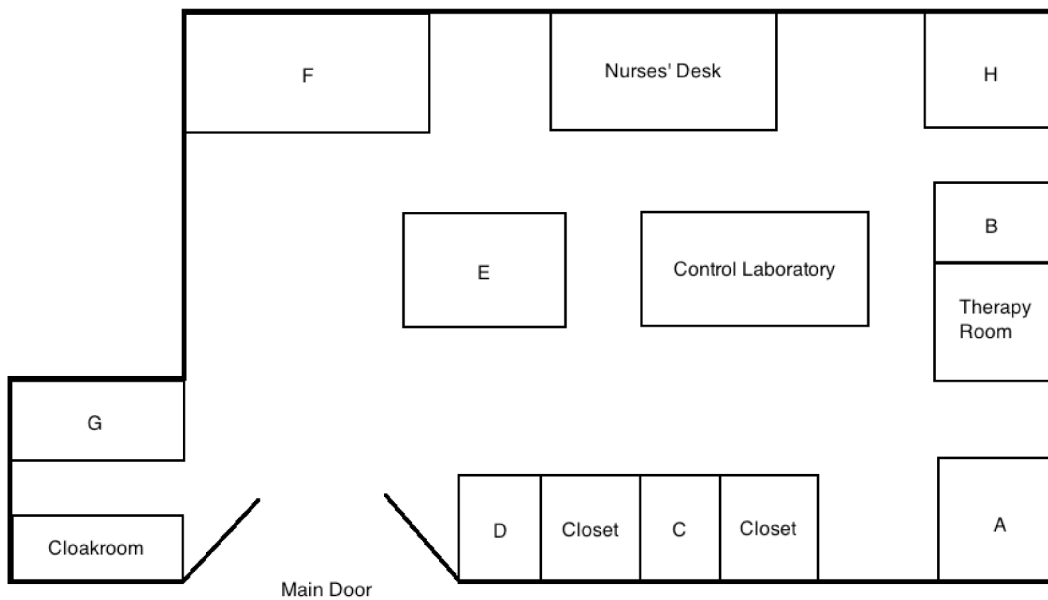
15. What will the patients be asked about whether they are willing to do?

- A. Letting one student attend the consultation.
- B. Asking postgraduate students to do treatment.
- C. Meeting students in group discussion.

Questions 16-20

Label the map below.

Write the correct letter, **A-H**, next to questions 16-20.



16. Reception

17. Mr. Green's room

18. Medical Records Office

19. Surgery Room

20. Manager's Office

SECTION 3. QUESTIONS 21-30

Questions 21-25

What is the main opinion of each of the following people?

Choose **FIVE** answers from the box and write the correct letter, **A-G**, next to questions 21-25.

Opinions

A lightning restrictions

B alternative lighting

C reduce the number of insects

D decline in the number of species

E climate changes

F impacts on the growth of animals

G impacts on water quality

21. Ken Simpson

22. Dave Kepler

23. Sharon Grey

24. Maria Jackson

25. Barbara Swallow

Questions 26 and 27

Choose the correct letter, **A**, **B** or **C**.

26. What does Jim think about the difference among species in natural and artificial light?

- A. It makes no difference.
- B. Species will die out in natural light.
- C. Species will die out in artificial light.

27. One reason why Jim and Jane felt unsatisfied about the theories discussed in the lecture was that

- A. governments didn't increase any spending on them.
- B. most theories had nothing to do with the exam.
- C. many theories lack solid proof in the field.

Questions 28-30

Choose **THREE** letters, **A-G**.

Which **THREE** topics are they interested in studying in the future?

- A** quality of life tourism
- B** wildlife park animals
- C** migration birds
- D** animals living in rural areas
- E** animals living in tropical climate
- F** the impact of different environment on animals
- G** pandas in the zoo

SECTION 3. QUESTIONS 21-30

Questions 21-25

What is the main opinion of each of the following people?

Choose **FIVE** answers from the box and write the correct letter, **A-G**, next to questions 21-25.

<p>Opinions</p> <p>A lightning restrictions</p> <p>B alternative lighting</p> <p>C reduce the number of insects</p>

- D decline in the number of species
- E climate changes
- F impacts on the growth of animals
- G impacts on water quality

21. Ken Simpson

22. Dave Kepler

23. Sharon Grey

24. Maria Jackson

25. Barbara Swallow

Questions 26 and 27

Choose the correct letter, **A**, **B** or **C**.

26. What does Jim think about the difference among species in natural and artificial light?

- A. It makes no difference.
- B. Species will die out in natural light.
- C. Species will die out in artificial light.

27. One reason why Jim and Jane felt unsatisfied about the theories discussed in the lecture was that

- A. governments didn't increase any spending on them.
- B. most theories had nothing to do with the exam.
- C. many theories lack solid proof in the field.

Questions 28-30

Choose **THREE** letters, **A-G**.

Which **THREE** topics are they interested in studying in the future?

- A quality of life tourism
- B wildlife park animals
- C migration birds
- D animals living in rural areas
- E animals living in tropical climate
- F the impact of different environment on animals
- G pandas in the zoo

SECTION 4. QUESTIONS 31-40

Questions 31 and 32

Choose **TWO** letters, **A-E**

Which **TWO** aspects did the new rules at the end of the 19th century focus on?

- A cooperation
- B competition
- C moral values
- D player's physical protection
- E business model

Questions 33-40

Complete the sentences below.

Write **ONLY ONE WORD** for each answer.

Football in the UK

- At present the main reason why UK schools push football education is the pressure from **33.** .
- Prior to the 19th, football players used different **34.** of rules.
- People attempted to standardise the rules from the whole **35.** , known as the 'Cambridge Rules' in 1848.
- Attendances were increasing due to the improvement of infrastructure and the **36.** system.
- Football became popular and it is regarded as a **37.** event.
- The football clubs were responsible for most of the **38.** and development for the football association.
- **39.** against other teams were also organised by the football clubs.
- In 1910s, **40.** football players were approved of in the game.